

OTHER ITEMS AVAILABLE FROM
LITE LAUNCHER

WWW.LITELAUNCHER.CO.UK



Canvas Launcher Dummies



Canvas Streamer Launcher



PVC Launcher Dummy
with Removable Tail

PVC Launcher Dummies



Tutor Bird Dummies



Ball Boy
Tennis Ball Adaptor



Launcher Blanks



Launcher Ball

Hand Throwing
Tutor Bird Range



Lite Launcher
MANUFACTURER & DISTRIBUTOR OF GUNDOG TRAINING PRODUCTS
Telephone: 01885 400 343 Web: www.litelauncher.co.uk



**RETRIEVE AIR II
REMOTE CONTROL LAUNCHER
INSTRUCTION MANUAL**

SAFETY FIRST

This device can fire a dummy or other projectile at a high velocity. Treat it as you would a loaded gun. Never point it at anyone or anything at any time.

If the dummy should be fired at a person or property it is capable of causing serious harm or damage or even death.

Be fully aware of what's going on around the launcher when using it or setting up. Be aware as to people or animals that may wander into the dummy's trajectory or fall area. Never use the launcher if there is a risk of hitting anyone or anything.

Only use the recommended dummies or quality standard tennis balls as launcher objects.

Remember that without a dummy on the device can fire high pressure air as a blast. This is capable of causing damage to persons or property just as a dummy may do.

Always wear eye and hearing protection when using any dummy launcher.

The dummies intended trajectory may change due to wind or other circumstances after launch so make sure you allow for this before firing the dummy or ball.

Never stand in front of the launcher or lean over the device when loaded or when loading it.

Always load a dummy when the device is unpressurised.

Thank you for Choosing
Lite Launcher!

Remember we have many other
products all information is available
on our website:

www.litelauncher.co.uk

WARRANTY

Lite Launcher products are covered by a 12 month return to base warranty as laid out below

This warranty applies only to Remote Launchers, Bird basket, Retrieve Air and Freelance models proof of purchase must be retained to validate warranty. Due to the nature of use no warranty is implied or given on dummies or blanks.

A 12 month return to base from date of purchase parts and labour warranty applies to any launcher that meets the criteria as set out below.

Any product that requires repair within the first three months of purchase shall be collected from the customer with Lite Launcher paying the cost of the courier service chosen by Lite Launcher. No cost for packaging/service is included only the courier service charge booked by Lite Launcher.

After three months the customer is responsible for the return cost back to Lite Launcher by whatever service they choose.

Lite Launcher will pay the return to customer courier charges until a period of 12 months from date of purchase has lapsed.

The launchers are covered for all mechanical and structural faults for a maximum 12 month period only.

The launcher warranty is not applicable for launchers used in a commercial environment. This being considered, scurries or working test, professional trainers or kennels, training groups and clubs unless otherwise specified.

The launcher has to have been properly maintained, with no modifications or otherwise or signs of abuse or misuse.

Batteries are not covered under any circumstances.

Launchers found to have used the Red or over powered blanks, humane blanks or similar are exempt from cover immediately

Retrieve Air products found to have been over pressurised are exempt from warranty Lite Launcher shall choose to either repair or replace parts at their discretion.

After 12 months the customer is liable for both parts and labour on any repairs as well as shipping to and from Lite Launcher

This warranty only applies to products from and used in the UK

EU customers are responsible for all shipping cost both to and from Lite Launcher for the entire 12 month period

This warranty is not transferable and only applies to the original purchasing customer.

Contact Lite Launcher

Tel: 01885 400343 Email info@litelauncher.co.uk

TO OPERATE

Position the launcher in a suitable place, making sure it is stable and the leg clamp is tightened into position.

Select either ball tube or spigot (this is dependent on the dummy you wish to fire) Screw it down onto the threaded receiver and make sure it is hand tight. Check it after every launch.

Place the dummy onto the spigot or the tennis ball fully into the tube. A small amount of lubricant such as WD40 can be sprayed periodically onto the spigot to assist if required, **but not** into the ball tube as it will contaminate the ball.

Remove the threaded cover cap and connect your air filling device (Pump or compressor) to the schrader valve (the car tyre type valve). **It is recommended that the pump be left connected to the valve whilst you use the launcher.**

Fill the launcher to your desired pressure **MIN 40 PSI - Max 160 PSI**. The higher the psi the further the dummy will fire.

Turn the main switch on The device is now ready to fire.

To fire the dummy press the remote control handset button once briefly.

Once fired repeat the procedure above starting with the main switch in the OFF position.

To fill the unit either a bicycle type track/stirrup pump or a portable cordless compressor can be used. It's desirable to get units that can exceed 100psi for better performance.

A good pressure for a longer launch is 120PSI. Higher pressures will launch it slightly further but will require more effort from the pump device. If a short launch is required the unit will work down to 40PSI.

See annex 1 for pictures.

MAINTENANCE

The unit requires very little maintenance.

This launcher is not WATERPROOF, it is water resistant but do not position it in a wet environment such as a puddle or similar.

CHANGING THE BATTERIES

To change batteries make sure no air is in the launcher, remove the 4 screws on the top black cover. Carefully move the lid to one side.

You should now have access the battery holder. Remove it by unclipping the snap connector... Change the 8 x AA batteries and re fit in the same orientation it was before removal. Turn on unit and test for the solenoid clicking.

Then repeat the operation instructions to use your retrieve air launcher.

See annex 1 for pictures.

STORAGE

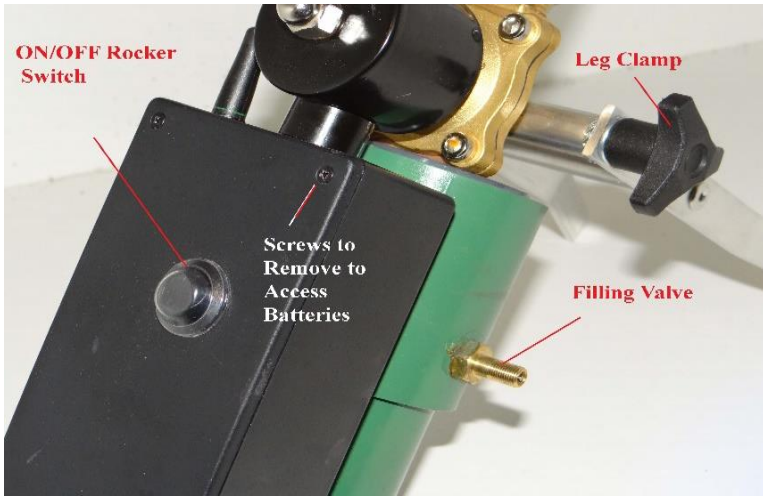
Always store the launcher without pressurised air inside. And always turn the main switch to off.

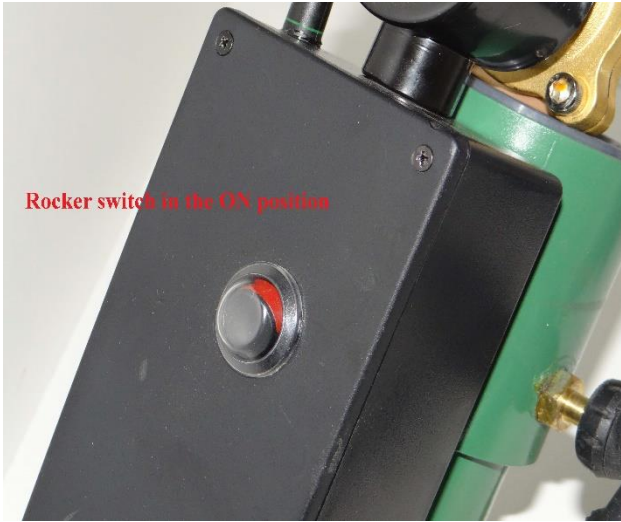
Keep the spigot and barrels clean from debris. Check the dummy spigot for and debris such as mud that may have fowled it when used.

NEVER store with a dummy left on the spigot.

If something seems wrong do not use the launcher. Seek to have your fault rectified before continuing to use the launcher.

Contact Lite Launcher at 01885400343 / e mail
info@litelauncher.co.uk

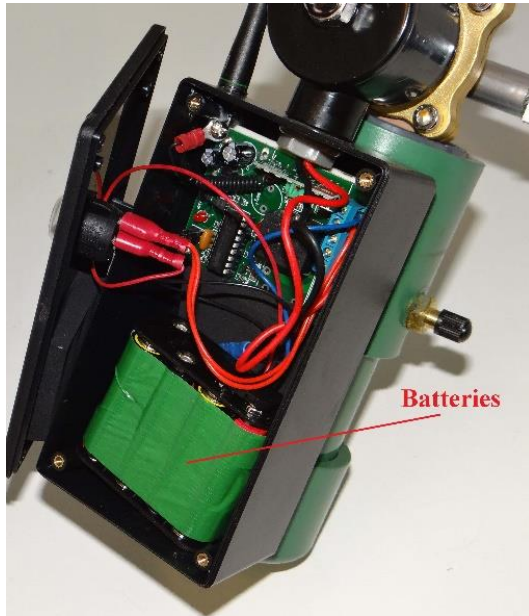




Rocker switch in the ON position



Press Button to FIRE the Launcher



Batteries



Batteries with tape removed